

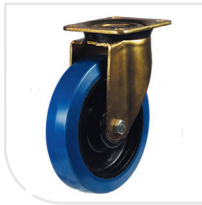


# INDUSTRIAL

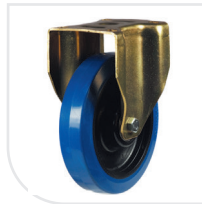
## SERIES: DRH/GDHBN

BRACKET: **HEAVY PRESSED STEEL**  
 WHEEL: **ELASTIC NON-MARKING RUBBER ON NYLON CENTRE**  
 BEARING: **ROLLER / BALL BEARING**

MEDIUM / HEAVY



<b>DRHBN</b> <b>SWIVEL</b>										
<b>GOLD BRACKET</b>										
125GDH4BNBJ	125	50		135x110	105x80	12	55	166	310	
150GDH4BNBJ	150	50		135x110	105x80	12	55	194	350	
160GDH4BNB	160	45		135x110	105x80	12	55	199	350	
200GDH4BNBJ	200	45		135x110	105x80	12	55	239	400	
100DRH4BNB	100	36		105x85	80x60	9	39	128	200	
125DRH4BNB	125	36		105x85	80x60	9	44	152	250	



<b>DRHBN</b> <b>FIXED</b>									
<b>GOLD BRACKET</b>									
125GDH8BNBJ	125	55		135x110	105x80	12		166	310
150GDH8BNBJ	150	55		135x110	105x80	12		194	350
160GDH8BNB	160	45		135x110	105x80	12		199	350
200GDH8BNBJ	200	45		135x110	105x80	12		239	400
100DRH8BNB	100	36		105x85	80x60	9		128	200
125DRH8BNB	125	36		105x85	80x60	9		152	250



<b>DRHBN</b> <b>BRAKED</b>									
<b>GOLD BRACKET</b>									
125GDH4BNBJSWB	125	55		135x110	105x80	12	55	166	310
150GDH4BNBJSWB	150	55		135x110	105x80	12	55	194	350
160GDH4BNBSWB	160	45		135x110	105x80	12	55	199	350
200GDH4BNBJSWB	200	45		135x110	105x80	12	55	239	400
100DRH4BNBSWB	100	36		105x85	80x60	9	39	128	200
125DRH4BNBSWB	125	36		105x85	80x60	9	44	152	250



<b>DRHBN</b> <b>BOLT HOLE</b>									
100DRHBH12BNB	100	36				12.1	39	128	200
125DRHBH12BNB	125	36				12.1	44	152	250



<b>DRHBN</b> <b>BOLT HOLE</b> <b>BRAKED</b>									
100DRHBH12BNBSWB	100	36				12.1	39	128	200
125DRHBH12BNBSWB	125	36				12.1	44	152	250

### EXPANDERS



### DIRECTIONAL LOCK



Only Gold swivel castors.